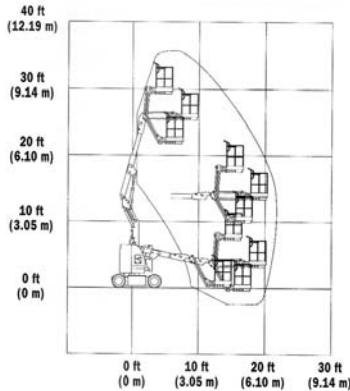


Articulated Booms



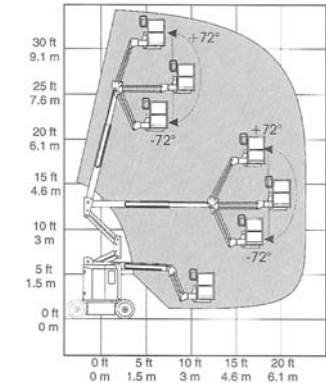
Order large, small, or unique booms with confidence knowing that Ahern Rentals can provide the equipment you need...always at competitive prices!



Cat/Class600-5798
 Make**JLG**
 Model**E300 AJ**
 Max Lift Height ...30'
 Capacity500 lbs
 Basket Size48"x30"
 PowerBattery
Stowed Dimensions
 Width48"
 Length18'
 Height6'7"
 Weight (gross)14,600 lbs
 Horiz Reach20'6"
 Up & Over Height. .13'1"
 Steer x Drive2x2

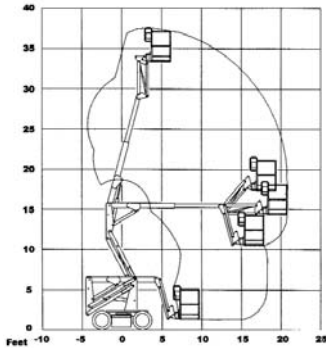


Cat/Class600-5799
 Make**JLG**
 Model**E300 AJP**
 Max Lift Height ...30'
 Capacity500 lbs
 Basket Size48"x30"
 PowerBattery
Stowed Dimensions
 Width48"
 Length18'4"
 Height6'7"
 Weight (gross)15,200 lbs
 Horiz Reach20'6"
 Up & Over Height. .13'1"
 Steer x Drive2x2

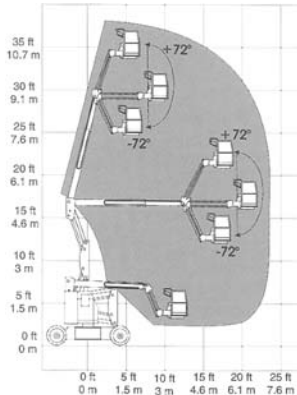


Cat/Class600-5798
 Make**GENIE**
 Model**Z-30/20 N**
 Max Lift Height ...30'
 Capacity500 lbs
 Basket Size46"x30"
 PowerBattery
Stowed Dimensions
 Width47"
 Length16'9"
 Height6'7"
 Weight (gross)14,500 lbs
 Horiz Reach21'
 Up & Over Height. .10'6"
 Steer x Drive2x2

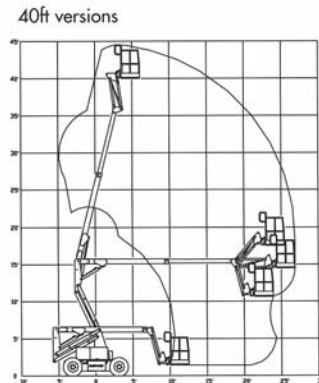
Ahern Rentals features articulated booms available in electric, gas or diesel to meet most high reach applications.



Cat/Class600-5817
 Make**SKYJACK**
 Model**SJKB-33N**
 Lift Height (max) ...33'
 Capacity500 lbs
 Basket Size48"x30"
 PowerBattery
Stowed Dimensions
 Width48"
 Length14'3"
 Height6'7"
 Weight (gross)14,500 lbs
 Horiz Reach21'4"
 Up & Over Height...15'4"
 Steer x Drive2x2
 Jib Length4'



Cat/Class600-5823
 Make**GENIE**
 Model**Z-34/22 N**
 Lift Height (max) ...34' 4"
 Capacity500 lbs
 Basket Size56"x30"
 PowerBattery
Stowed Dimensions
 Width58"
 Length18'7"
 Height6'7"
 Weight (gross)11,500 lbs
 Horiz Reach22'4"
 Up & Over Height...15'3"
 Steer x Drive2x2



Cat/Class600-5840
 Make**SKYJACK**
 Model**SJKB-40C**
 Lift Height (max) ...40'
 Capacity500 lbs
 Basket Size66"x30"
 PowerDiesel or
 Battery
Stowed Dimensions
 Width5'10"
 Length18'3"
 Height6'7"
 Weight (gross)13,440 lbs
 Horiz Reach27'7"
 Up & Over Height...15'
 Steer x Drive2x2

HIGH REACH

21

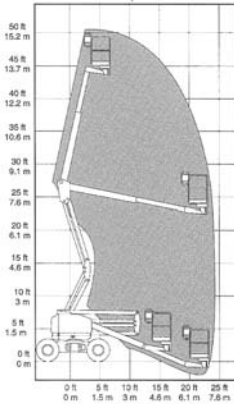
Ahern Rentals maintains a large selection of articulated booms providing ultimate reaching versatility with up, out and over positioning. Rent One Today!

HIGH REACH

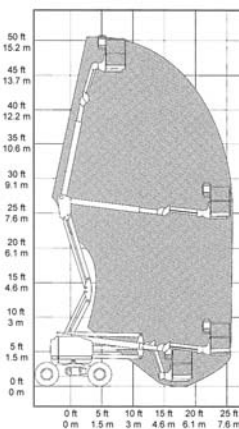
23



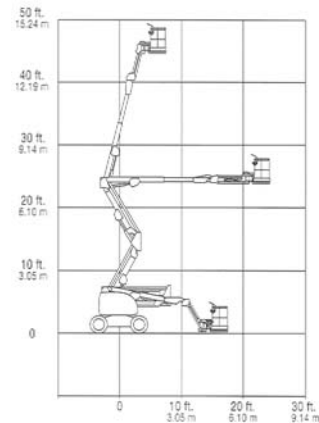
Pictured: Z-45/25J RT Gas.



Cat/Class600-5858
 Make**GENIE**
 Model**Z-45/25J RT**
 Lift Height (max) . . .45'6"
 Capacity500 lbs
 Basket Size72"x36"
 PowerGas/LP or Diesel
Stowed Dimensions
 Width7'4"
 Length22'3"
 Height6'10"
 Weight (gross)14,700 lbs
 Generator3,000 W
 Horiz Reach25'
 Up & Over Height. .23'8"
 Steer x Drive2x2 or 2x4

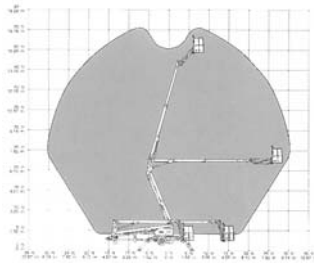


Cat/Class600-5857
 Make**GENIE**
 Model**Z-45/25J DC**
 Lift Height (max) . . .45'3"
 Capacity500 lbs
 Basket Size72"x30"
 PowerBattery
Stowed Dimensions
 Width5'9"
 Length22'3"
 Height6'7"
 Weight (gross)16,000 lbs
 Horiz Reach25'
 Up & Over Height. .23'5"
 Steer x Drive2x2

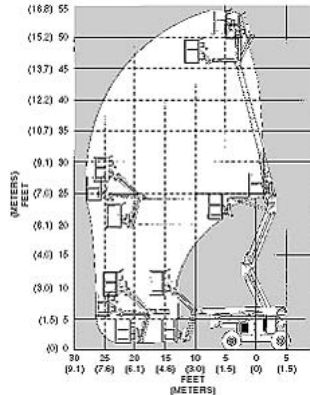


Cat/Class600-5857
 Make**JLG**
 Model**E450AJ**
 Lift Height (max) . . .45'
 Capacity500 lbs
 Basket Size60"x30"
 PowerBattery
Stowed Dimensions
 Width5'9"
 Length21'2"
 Height6'7"
 Weight (gross)14,400 lbs
 Horiz Reach23'9"
 Up & Over Height. .25'3"
 Steer x Drive2x2

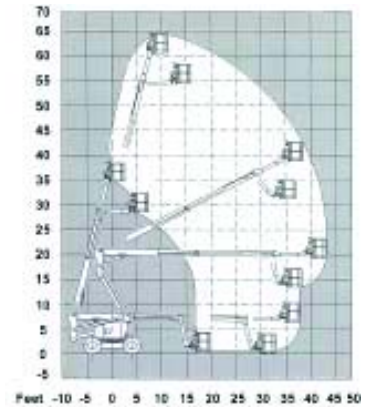
Articulated Booms



Cat/Class600-5853
 Make**GENIE**
 Model**TMZ-50/30**
 Lift Height (max)56'
 Capacity500 lbs
 Platform Size48"x30"
 PowerBattery
Stowed Dimensions
 Width65"
 Length22'
 Height78"
 Weight (gross)4,600 lbs
 Horiz Reach30' (from pivot)
 Horiz Reach23'
 (from edge of outrigger foot pads)
 Jib4'6"



Cat/Class600-5862
 Make**SNORKEL**
 Model**ATB 50**
 Lift Height (max)50'
 Capacity500 lbs
 Basket Size96"x30"
 PowerDiesel
Stowed Dimensions
 Width7'6"
 Length21'
 Height6'11"
 Weight (gross)14,980 lbs
 Generator2,000 W
 Horiz Reach28'
 Up & Over Height. . .24'
 Steer x Drive2x4



Cat/Class600-5870
 Make**SNORKEL**
 Model**ATB 60**
 Lift Height (max)60'
 Capacity500 lbs
 Basket Size96"x30"
 PowerGas
Stowed Dimensions
 Width7'11.5"
 Length29'1.5"
 Height8'3"
 Weight (gross)27,600 lbs
 Generator2,000 W
 Horiz Reach43'1"
 Up & Over Height. . .19'3"
 Steer x Drive2x2